

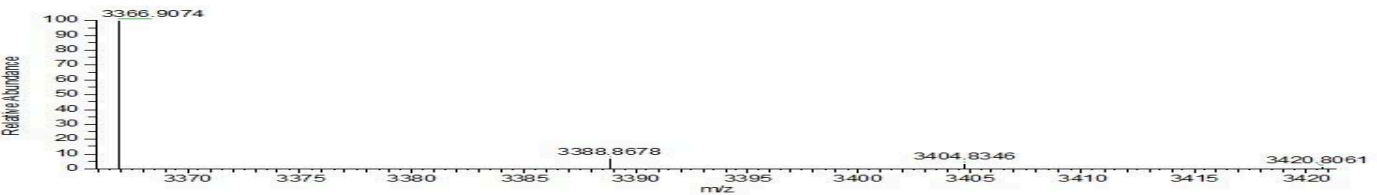
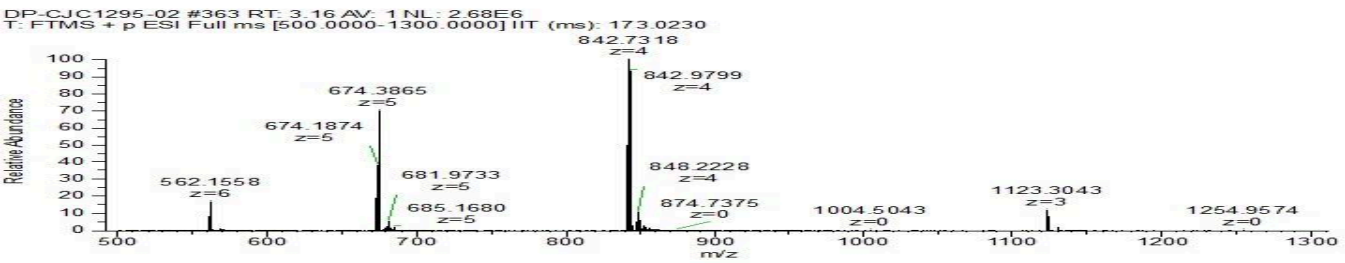
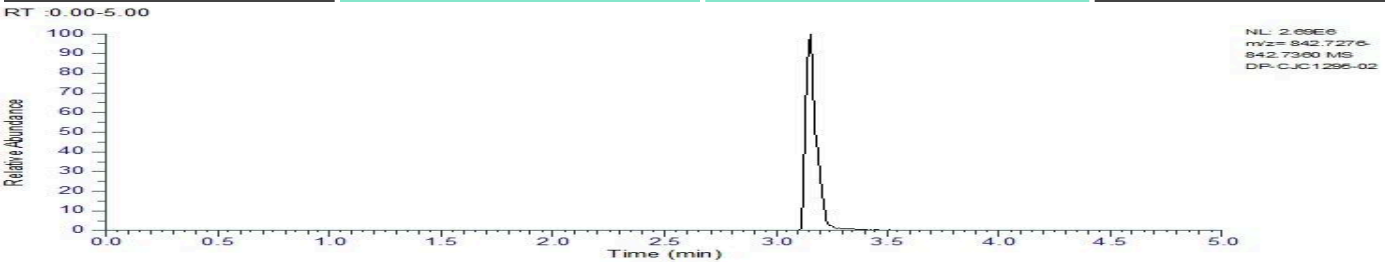
Client: Direct Peptides  
[www.directpeptides.com](http://www.directpeptides.com)

Sample received: **06/02/25**  
Analysis conducted: **06/03/25**

<b>Compound:</b>	Mod GRF 1-29 (No DAC)	<b>CAS:</b>	446036-97-1
<b>Batch/Lot #:</b>		<b>Formula:</b>	C152H252N44O42
<b>Appearance:</b>	White lyophilized powder	<b>Mol Wt:</b>	3367.9 g/mol

**Method:** Qualitative and Quantitative chemical analysis by LC-MS with UV detection  
**Pubchem CID:** 91976842  
[CJC1295 Without DAC](#) | [C152H252N44O42](#) | [CID 91976842 - PubChem](#)

	Specification	Result	
<b>Identity Test:</b>	CJC1295 no DAC	CJC1295 no DAC	<b>Conforms</b>
<b>Quantity:</b>	-	-	-
<b>Purity:</b>	>98%	<b>99.79%</b>	<b>Conforms</b>



Analysis Performed by  
Dr. Roberto Marin  
Analytical Chemist  
contact@bioregen.com



COA #10395  
Security Key **DIRECTPEP**  
[bioregen.com/verify](http://bioregen.com/verify)



Client: Direct Peptides  
[www.directpeptides.com](http://www.directpeptides.com)

Sample received: **06/02/25**  
Analysis conducted: **06/03/25**

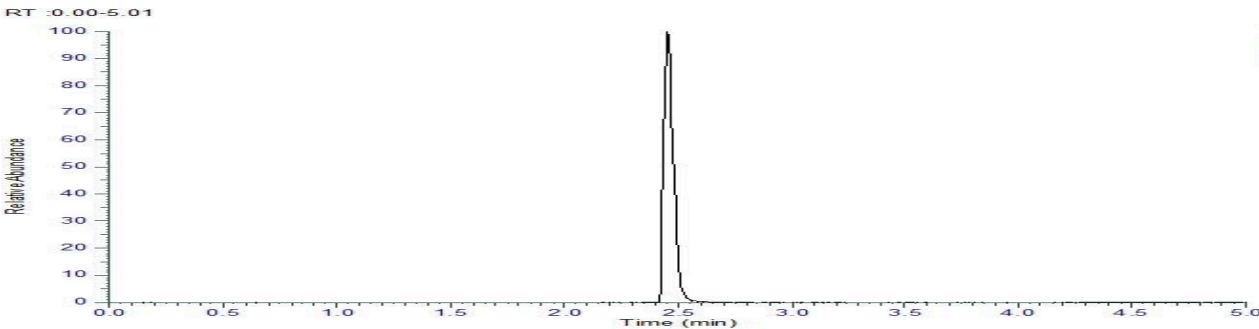
<b>Compound:</b>	Ipamorelin	<b>CAS:</b>	170851-70-4
<b>Batch/Lot #:</b>		<b>Formula:</b>	C38H49N9O5
<b>Appearance:</b>	White lyophilized powder	<b>Mol Wt:</b>	711.9 g/mol

**Method:** Qualitative and Quantitative chemical analysis by LC-MS with UV detection

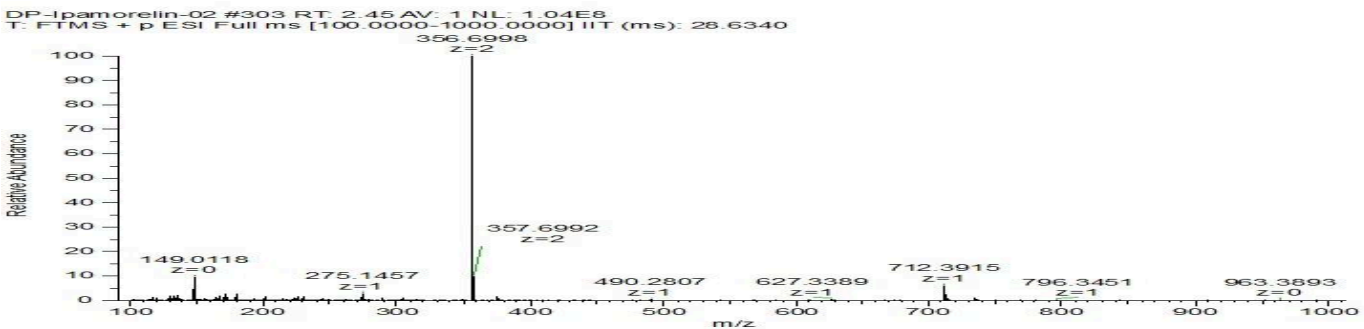
**Pubchem CID:** 9831659

[Ipamorelin | C38H49N9O5 | CID 9831659 - PubChem](#)

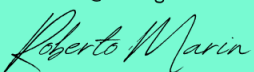
	Specification	Result	
<b>Identity Test:</b>	Ipamorelin	Ipamorelin	<b>Conforms</b>
<b>Quantity:</b>	-	-	-
<b>Purity:</b>	>98%	<b>99.83%</b>	<b>Conforms</b>



NL: 1.04E8  
m/z: 356.6983  
356.7019 MS  
DP: Ipamorelin-02



Analysis Performed by  
Dr. Roberto Marin  
Analytical Chemist  
[contact@bioregen.com](mailto:contact@bioregen.com)



COA #10395  
Security Key **DIRECTPEP**  
[bioregen.com/verify](http://bioregen.com/verify)

